



211 Warrington Road

Glazebury, Warrington, WA3 5LL

£775 PCM



Hérons Reach is a superb gated development situated on Warrington Road in one of the most sought after and popular locations in Glazebury. Constructed over two floors, Herons Reach is one of Glazebury's most desirable addresses. This ground floor 2 bed apartment comprises of open plan lounge / dining kitchen with integrated appliances built in including, microwave, oven hob and extractor, fridge freezer and dishwasher. There are 2 double bedrooms - master with built in wardrobes and bathroom with separate shower and bath. The properties have a high specification throughout and a finish incorporating: Gated security entrance, Communal TV / FM / DAB, Central heating, High specification fitted kitchen, uPVC double-glazing, some apartments with French doors, Luxury bathroom with separate shower and bath. With easy access to Manchester and Liverpool as well as being situated close to the East Lancashire Road this property would be ideal for those wanting a desirable location yet close enough for the commute to work. We strongly recommend that early viewing is a must in order to not miss out on this wonderful property. No Pets. No Smokers.



GROUND FLOOR

Entrance / Hallway

Lounge

Kitchen / Diner

Master Bedroom

Bedroom 2

Bathroom

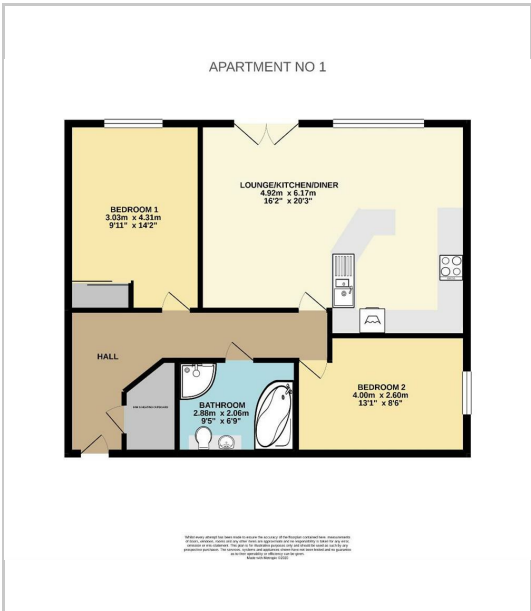
EXTERNAL

Communal Gardens

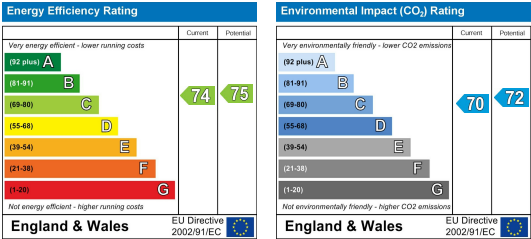
Area Map



Floor Plans



Energy Efficiency Graph



These particulars, whilst believed to be accurate are set out as a general outline only for guidance and do not constitute any part of an offer or contract. Intending purchasers should not rely on them as a representation of fact, but must satisfy themselves by inspection or otherwise as to their accuracy. No person in this firms employment has the authority to make or give any representation or warranty in relation to this property.

